

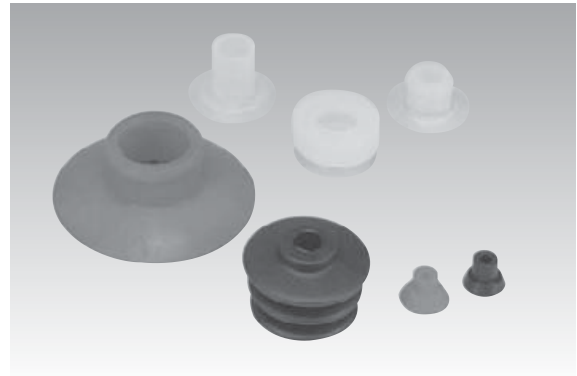
KPS Model (Plastic Bag Opening)

Features and Strengths

Developed to be used for opening plastic bags this pad gives good adhesion to thin plastic and film type materials.

Suitable for Handling

- Plastic Bag Opening
- Thin Film Materials
- Paper Bag Handling



Order No.

KPS-1

①

U

②

① Vacuum pad Ø

• KPS-1	- Ø34
KPS-2	- Ø28
KPS-3	- Ø13
KPS-4	- Ø16
KPS-5	- Ø28
KPS-5-15	- Ø15
KPS-6	- Ø30
KPS-7	- Ø68
KPS-8	- Ø25
VU-30-X	- Ø30

② Material

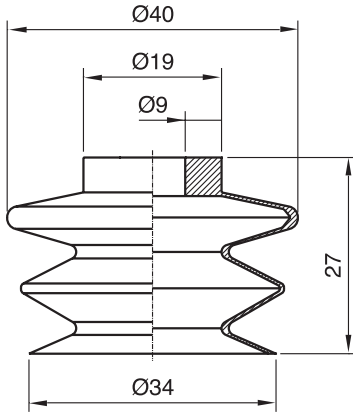
• N	- NBR
S	- Silicon
CS	- C. Silicon
• U	- Urethane

Recommended (max.) lifting forces

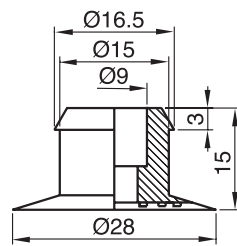
Model	Volume (cm³)	Lifting Force (kg)–Perpendicular		
		- 20kPa	- 60kPa	- 90kPa
KPS-1	14,5	1,22	2,24	2,75
KPS-2	2,0	0,7	1,53	1,83
KPS-3	0,5	0,35	0,85	1,12
KPS-4	1,0	0,6	1,22	1,63
KPS-5	2,0	0,7	1,53	1,83
KPS-5-15	1,1	0,4	1,11	1,23
KPS-6	2,0	0,8	1,7	2,05
KPS-7	20	5,5	14	18,5
KPS-8	1,4	0,5	1,15	1,25
VU-30-X	1,8	0,65	1,48	1,78

Dimensional Information

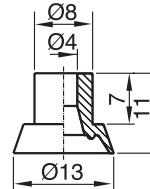
KPS-1



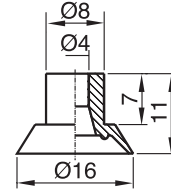
KPS-2



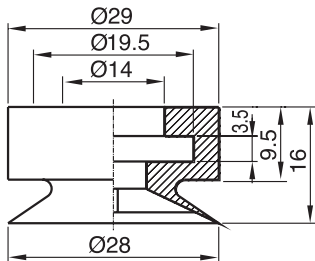
KPS-3



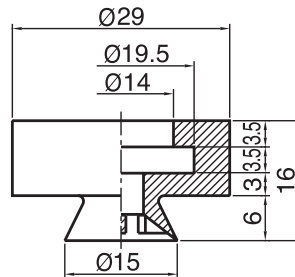
KPS-4



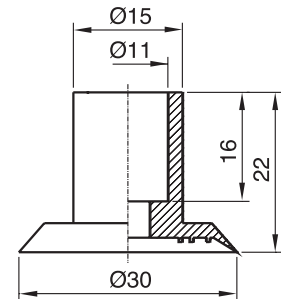
KPS-5



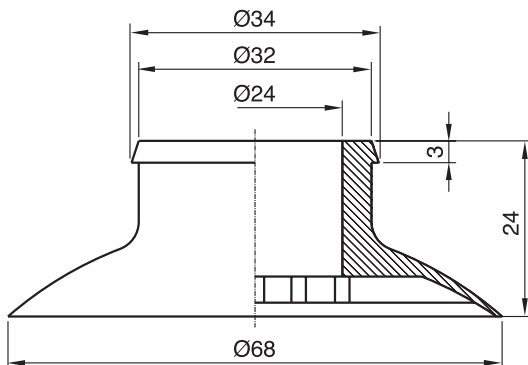
KPS-5-15



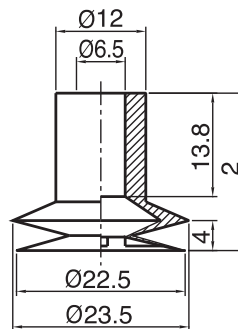
KPS-6



KPS-7



KPS-8



VU-30-X

